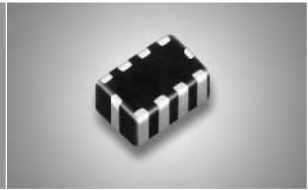


# LC Filter Array

## LFA Series



### Features

- SMD Type, 4 elements in one chip, 0805 size, suitable for high-density circuit design.
- Construction of dielectric and magnetic materials.
- EMI filtering--steep insertion loss characteristics and removes noise over a wide range.
- Small size and low profile.
- $PI(\pi)$  type structure filter.

### Applications

- For cellular phone, digital AV equipment, digital camera, PDA, and MP3 player
- LCD module/display
- Wireless handsets
- Lap top computer, desk top computer

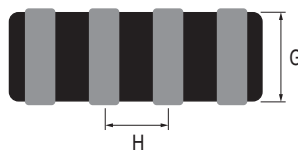
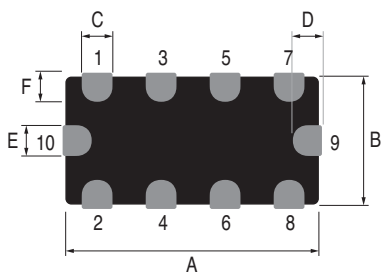
### How to Order

**LFA**   **0805**   **P**   **101**   **—**

1            2            3            4            5

- 1 Product name: LFA—LC Filter Array
- 2 Product size: 0805/EIA
- 3 Type: P— $PI(\pi)$  type
- 4 Cut-off frequency (MHz):  $XX \times 10^N$ , ex. : 100MHz=  $10 \times 10^1$  MHz → 101
- 5 Packaging :  
 P—Embossed paper tape, 7" reel  
 E—Embossed plastic tape, 7" reel  
 N—Embossed anti-static electricity tape, 7" reel

### Dimensions



Unit:mm

Size (EIA)	2012 (0805)
A	$2.00 \pm 0.15$
B	$1.25 \pm 0.15$
C	$0.25 \pm 0.15$
D	$0.20 \pm 0.15$
E	$0.25 \pm 0.15$
F	$0.20 \pm 0.15$
G	$0.80 \pm 0.15$
H	$0.50 \pm 0.15$

# LC Filter Array – LFA series

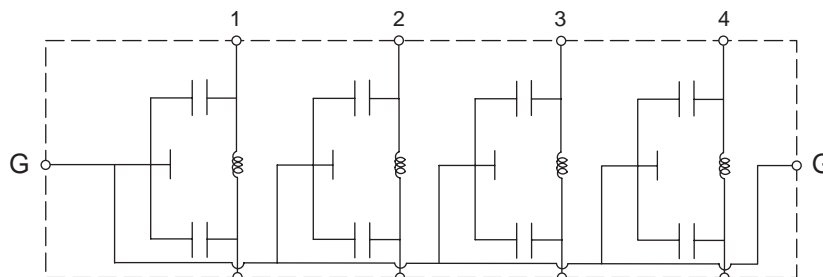
## Specifications

### Electrical Property

Cut-Off Frequency @-3dB	Attenuation @<-30dB	Capacitance (Reference) @1MHz	Rated Current	Rated Voltage	Insulation Resistance @3VDC (min)
100 MHz Typ.	800~2000 MHz	55pF	250 mA	12V	100 MΩ

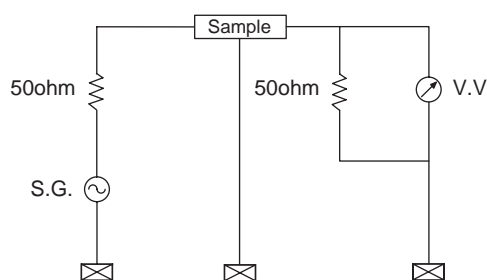
Operation Temperature: -25 ~ 125°C

### Schematics

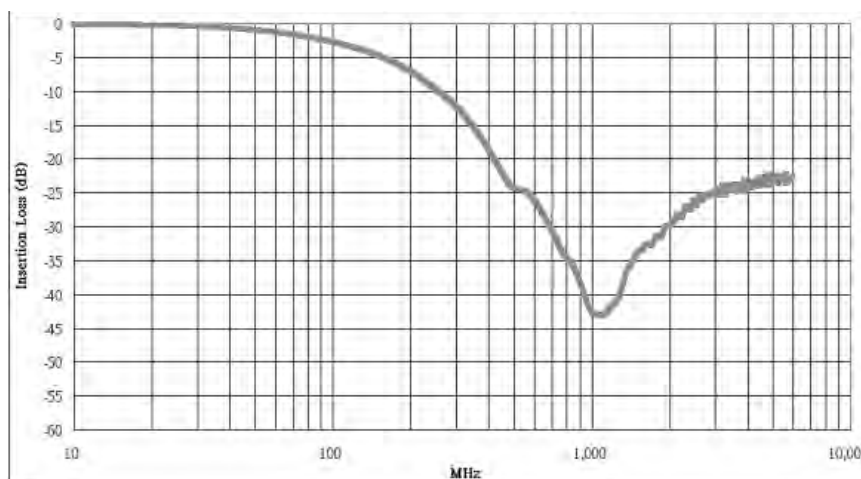


## Insertion Loss vs. Frequency Characteristics

### Measurement circuit



### Typical insertion loss



## Package

Standard packing quantity

Size (EIA)	2012 (0805)
Quantity (pcs/reel)	4,000